

GENERAL NOTES:  
- Do not scale from this drawing.  
- Any discrepancies in documentation, contact the architect for clarification.  
- Use figured dimensions only.  
- Contact the architect for clarifications if required.  
- Calder Flower Architects hold no liability and responsibility for use of drawings issued in DWG format.  
- Calder Flower Architects are not liable for any loss, damage, claim, cost demand as a result of the use or receipt of drawings issued in DWG format.

DRAWING NOTES:



1 Sandstone Wall



2 Metal Battens - Rust Appearance



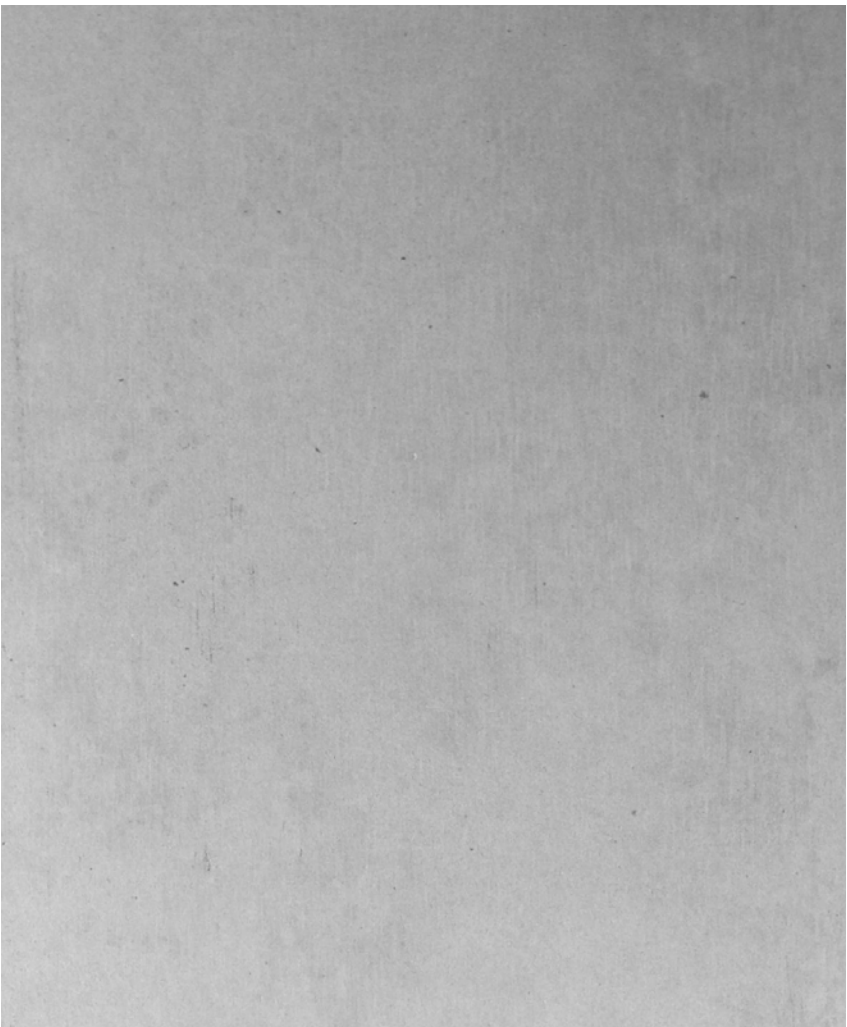
3 Perforated Metal Panels - Rust Appearance



4 Perforated Metal Panels - Bronze Anodised Aluminium



5 External Laminate Panels - Timber Appearance



6 Pre Finished Compressed Fibre Cement Panels



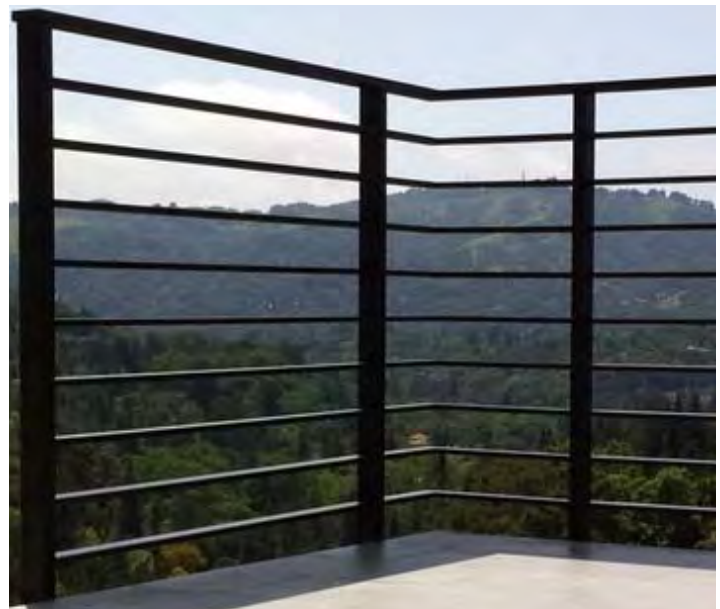
7 Glazed Tiles/Bricks



8 Breeze Blocks



9 Bronze Anodised Aluminium Framed Windows and Doors



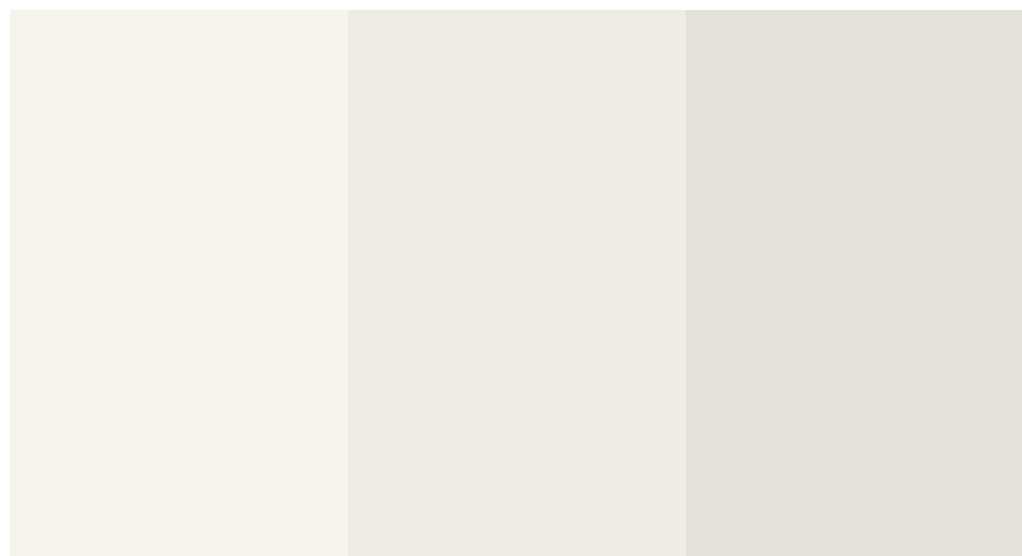
10 Bronze Anodised Aluminium Balustrade



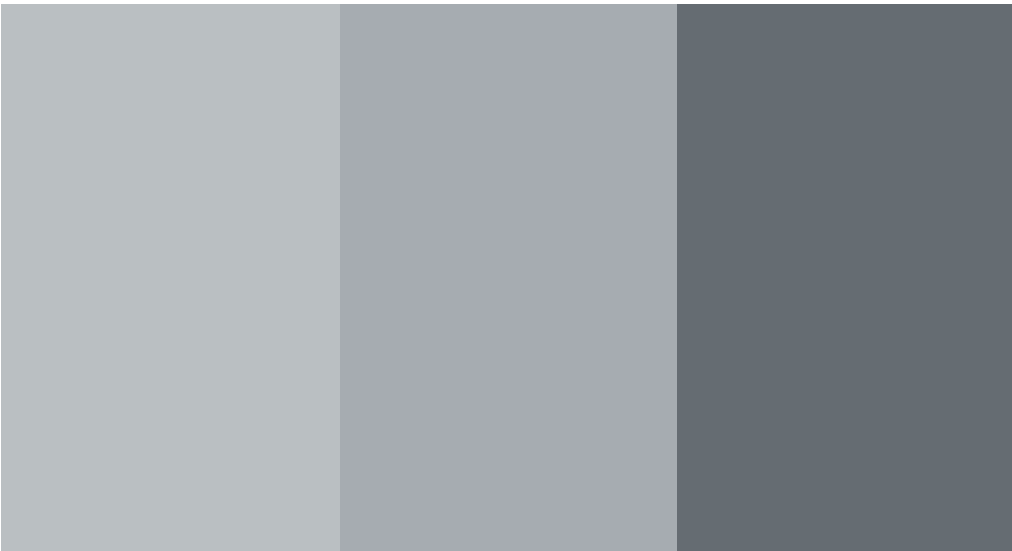
11 Colorbond Roofing, Gutters & Downpipes - RACF



12 Colorbond Roofing, Gutters & Downpipes - ILUs



13 Render with Painted Finish - White



14 Render with Painted Finish - Grey



15 Render with Painted Finish - Greens



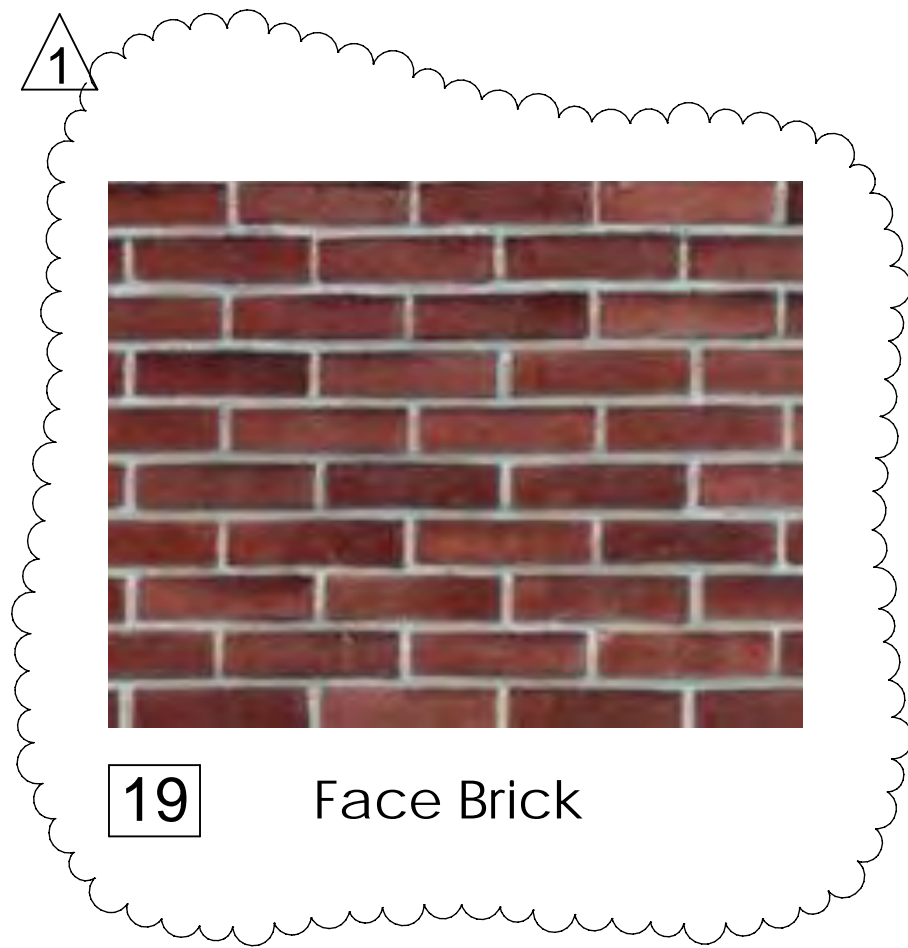
16 Render with Painted Finish - To Match RACF Roofing



17 Render with Painted Finish - To Match ILU Roofing



18 Bronze Anodised Aluminium Acoustic Louvre Screens



19 Face Brick

Architect



Client



Project Manager



Date

16.04.14  
05.11.14  
11.12.14

Revision

Issued for DA  
Building material #19 added  
Issued for DA

Rev

A  
1  
B

Issue

SLLF  
PM  
PM

Drawn

LC  
LC

Check

PM  
LC

Project  
**SCC North Turramurra**  
402 Bobbin Head Rd, North Turramurra, NSW 2047

Drawing Title  
**External Materials/ Sample Board**

Date created:

06/11/2013

North

Scale:

Refer Scale Bar

Original Paper Size: B1

Development Application

Project No.

12140

Phase

DA

Drawing No.

DA 500

Issue

B